

1" Electric Manifold Valve Assemblies

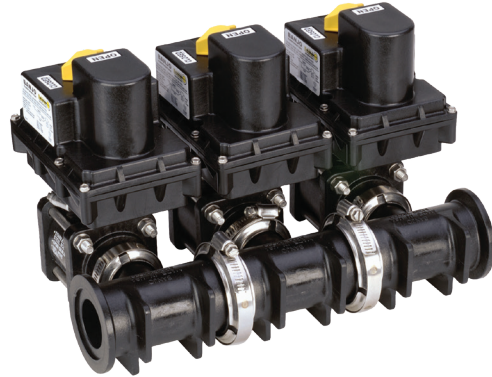


2 Valve Manifold



PART NO	OUTLET FITTINGS
2 VALVE MANIFOLD ASSEMBLY M200 SERIES	
MEV102CF	1" Manifold Valve Assembly 2" Inlet Flanges, 1" Outlet Flanges

3 Valve Manifold



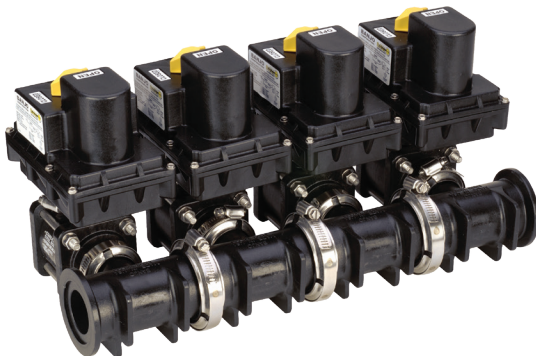
PART NO	OUTLET FITTINGS
3 VALVE MANIFOLD ASSEMBLY M200 SERIES	
MEV103CF	1" Manifold Valve Assembly 2" Inlet Flanges, 1" Outlet Flanges



PART NO	OUTLET FITTINGS
3 VALVE MANIFOLD ASSEMBLY M200 SERIES with mounting Brackets	
MEV103MB	1" Manifold Valve Assembly 2" Inlet Flanges, 1" Outlet Flanges w/ Mounting Brackets

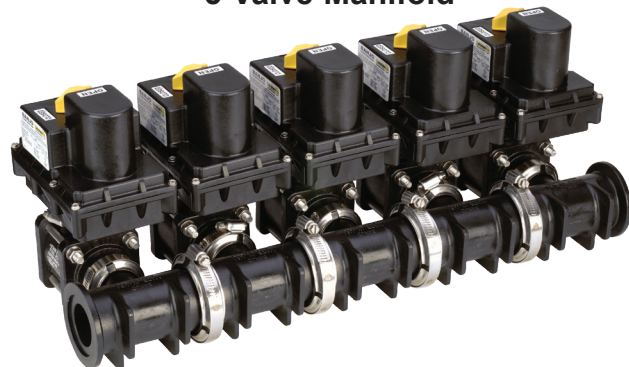
PART NO	OUTLET FITTINGS
FLANGED MOUNTING BRACKET TEE	
M200100TEEB	2" x 1" Standard Port Flanged Tee w/ Mounting Bracket

4 Valve Manifold



PART NO	OUTLET FITTINGS
4 VALVE MANIFOLD ASSEMBLY M200 SERIES	
MEV104CF	1" Manifold Valve Assembly 2" Inlet Flanges, 1" Outlet Flanges

5 Valve Manifold



PART NO	OUTLET FITTINGS
5 VALVE MANIFOLD ASSEMBLY M200 SERIES	
MEV105CF	1" Manifold Valve Assembly 2" Inlet Flanges, 1" Outlet Flanges

MANIFOLD SYSTEMS

1" - 3" Electric Manifold Valves



Features:

- 316 stainless steel ball & stem.
- FKM (viton type) or EPDM O-rings.
- Fiberglass reinforced polypropylene, glass reinforced PTFE seats.
- 12-volt DC operated, 150 P.S.I. maximum pressure.
- Internally fused/automatic reset, open/closed indicator

3/4 to 1-1/4 Second Response Time

PART NO	OUTLET FITTINGS
1", 2" & 3" ON/OFF ELECTRIC MANIFOLD VALVES	
MEV100CF	1" Full Port Electric Valve
MEV200CF	2" Standard Port Electric Valve
MEV220CF	2" Full Port Electric Valve
MEV300CF	3" Full Port Electric Valve

4 Second Response Time

PART NO	OUTLET FITTINGS
1" & 2" REGULATING ELECTRIC MANIFOLD VALVES	
MEVR100CF	1" Full Port Electric Valve
MEVR200CF	2" Standard Port Electric Valve
MEVR220CF	2" Full Port Electric Valve

On/Off Electric Valves 3/4 to 1-1/4 Response Time

PART NO	OUTLET FITTINGS
1" & 2" ON/OFF SIDE LOAD ELECTRIC MANIFOLD VALVES	
MEV100SLCF	1" Full Port Electric Valve
MEV200SLCF	2" Standard Port Electric Valve
MEV220SLCF	2" Full Port Electric Valve

Regulating Electric Valves - 4 Second Response Time

PART NO	OUTLET FITTINGS
1" & 2" REGULATING ELECTRIC MANIFOLD VALVES	
MEVR100SLCF	1" Full Port Electric Valve
MEVR200SLCF	2" Standard Port Electric Valve
MEVR220SLCF	2" Full Port Electric Valve

On/Off Electric Valves 3/4 to 1-1/4 Response Time

PART NO	OUTLET FITTINGS
1" & 2" ON/OFF BOTTOM LOAD ELECTRIC MANIFOLD VALVES	
MEV100BLCF	1" Full Port Electric Valve
MEV200BLCF	2" Standard Port Electric Valve
MEV220BLCF	2" Full Port Electric Valve



MEV200CF



MEV200SLCF
(Side Load)



MEV200BLCF
Bottom Load

NOTE: NO Regulating Valve available for 3-way bottom load electric manifold valves.

MANIFOLD SYSTEMS

Manifold Pressure Spike Valves



Features:

- FKM (viton type) seals
- Precision molded in polypropylene.
- Preset pressure spring.
- Poppet is diamond turned, after molding, to make it spherically perfect, which provides precise seal.
- 360° Orientation.

PART NO	OUTLET FITTINGS
MANIFOLD PRESSURE SPIKE VALVES	
MPRV100-050	1" Pressue Spike Valve
MPRV100-075	1" Pressue Spike Valve
MPRV100-100	1" Pressue Spike Valve
MPRV100-125	1" Pressue Spike Valve
MPRV100-150	1" Pressue Spike Valve



MPRV100-100

Manifold Micro Valve

Manifold Micro Valve:

- 90° rotating handle.
- Standard FKM (viton type) seats and O-rings.
- Maximum operating pressure 300 P.S.I.

PART NO	OUTLET FITTINGS
POLY MANIFOLD MICRO VALVES	
MLV100V	1" Manifold Micro Valve



MLV100V

Manifold Bolted Ball Valves 4 & 6 Bolt Valves

Features:

- FKM (viton type) seals
- Precision molded in polypropylene.
- PTFE self-lubricating stem bushings
- Self-aligning ball moves freely against the PTFE seats for smooth operation.

PART NO	OUTLET FITTINGS
4 & 6 BOLT VALVES	
MV100CF	1" Flange Ball Valve
MV200CF	2" Flange Ball Valve
MV220CF	2" Full Port Flange Ball Valve
MV225CF	2" Full Port Flange 5 Way Valve
MV300	3" Standard Flange Ball Valve
MV300CF	3" Full Port Flange Ball Valve



MV300CF



MV200CF



MV225CF

2" Standard Port Manifold "Stubby Valve"™



Features:

- Stainless steel bolts.
- Glass filled polypropylene
- Multiple design options.
- Unique patented compact design.
- Lightweight.
- Maximum operating pressure
100 P.S.I. @ 70°F. 75 P.S.I. @ 150°F.



VSMT200CF



VSF200CF

PART NO	OUTLET FITTINGS
2" MANIFOLD STUBBY VALVES	
VSMT200CF	2" Flange x 2" Male NPT
VSF200CF	2" Flange x 2" Male Adapter

2" Full Port Manifold "Stubby Valve"™



MVS220FP



MVSF220FP



MVS220CF



MVSMT220FP

PART NO	OUTLET FITTINGS
2" FULL PORT MANIFOLD STUBBY VALVES	
MVS220FP	2" FP Flange x 2" Female NPT
MVSF220FP	2" FP Flange x 2" Male Adapter
MVS220CF	2" FP Flange x 2" FP Flange
MVSMT220FP	2" FP Flange x 2" Male NPT

2" Full Port Manifold "Stubby Valve"™ W/SS



MVS220HSFP



MVSF220HSFP



MVSMT220HSFP

PART NO	OUTLET FITTINGS
2" FULL PORT MANIFOLD STUBBY VALVES W/SS	
MVS220FP	2" FP Flange x 2" Female NPT
MVSF220FP	2" FP Flange x 2" Male Adapter
MVS220CF	2" FP Flange x 2" FP Flange

2" Full Port Manifold Stainless Steel "Stubby Valve"™

Features:

- 100% PTFE ball seats.
- Unique compact design.
- All TFE seals. No elastomers.
- 1000 P.S.I. maximum



PART NO	OUTLET FITTINGS
2" FULL PORT MANIFOLD stainless steel STUBBY VALVES	
MVS220SS	2" FP Flange x 2" FP Flange Stainless Steel Stubby Valve
MVSF220SS	2" FP Flange x 2" Male Adapter Stainless Steel Stubby Valve
MVSMT220SS	2" FP Male NPT x 2" FP Flange Stainless Steel Stubby Valve

3" Manifold "Stubby Valve"™



Features:

- Stainless steel bolts.
- Glass filled polypropylene
- Multiple design options.
- Unique patented compact design.
- Lightweight.
- Maximum operating pressure
100 P.S.I. @ 70°F. 75 P.S.I. @ 150°F.



MVSF300



MVSF300FP



MVSMT300



MVS300CF



MVS300CFFP

PART NO	OUTLET FITTINGS
3" MANIFOLD STUBBY VALVES	
MVSF300	3" Flange x 3" Male Adapter
MVSF300FP	3" Full Port Flange x 3" Male Adapter
MVSMT300	3" Flange x 3" Male NPT

PART NO	OUTLET FITTINGS
3" MANIFOLD STUBBY VALVES	
MVS300CF	3" Flange x 3" Flange
MVS300CFFP	3" Full Port Flange x 3" Full Port Flange

3" Full Port Manifold "Stubby Valve"™ W/SS



MVS300HSFP



MVSF300HSFP



MVSMT300HSFP

PART NO	OUTLET FITTINGS
3" FULL PORT MANIFOLD STUBBY VALVES W/SS	
MVS300HSFP	3" FP Flange x 3" FP Flange w/SS Ball, Stem & Handle
MVSF300HSFP	3" FP Flange x 3" Male Adapter w/SS Ball, Stem & Handle
MVSMT300HSFP	3" FP Flange x 3" Male NPT w/SS Ball, Stem & Handle

3-Way Manifold Ball Valves



Features:

- Stainless steel bolts.
- Precision molded in polypropylene. Polypropylene is reinforced with fiberglass for additional strength.
- Self-aligning ball moves freely against the PTFE seats for smooth operation.
- The valve opens and closes with very little pressure on the handle.
- Ball is diamond turned, after molding, to make it spherically perfect, providing precise contact between ball and seats.
- PTFE self-lubricating stem bushings and seats cannot stick or bind.
- Maximum operating pressure 100 P. S.I
- FKM (viton type) seals.



MV100BL



MV200BL



MV220BL

PART NO	OUTLET FITTINGS
4 BOLT BOTTOM LOAD MANIFOLD VALVES	
MV100BL	1" Manifold Flanged Valve
MV200BL	2" Manifold Flanged Valve
MV220BL	2" Full Port Manifold Flanged Valve



MV300BL

PART NO	OUTLET FITTINGS
6 BOLT BOTTOM LOAD MANIFOLD VALVES	
MV300BL	3" Manifold Flanged Valve



MV100SL



MV200SL



MV220SL

PART NO	OUTLET FITTINGS
4 BOLT SIDE LOAD MANIFOLD VALVES	
MV100SL	1" Manifold Flanged Valve
MV200SL	2" Manifold Flanged Valve
MV220SL	2" Full Port Manifold Flanged Valve
MVT220SL	2" Full Port Manifold Flanged Valve

BOTTOM LOAD: Directional flow right or left. Valve can be turned off to stop flow.

SIDE LOAD: Directional flow right or left. Valve cannot be turned off.



Manifold Dry Disconnect

Features:

- Unrestricted 1-1/2" flow.
- Minimal fluid spillage.
- Lightweight, economical and easy to use.
- Reduces risk of exposure.
- Wide range of chemical resistance.
- Cannot be uncoupled in open position.
- Handles cannot be opened after male and female are separated.
- 100 P.S.I. maximum operating pressure.

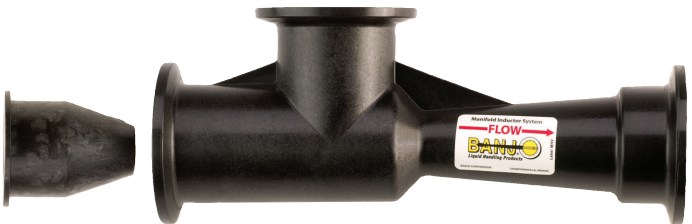


PART NO	DESCRIPTION
MANIFOLD DRY DISCONNECT	
DM200ACF	2" Flanged Male Dry-Mate
DM200DCF	2" Flanged Female Dry-Mate

Polypropylene Inductors

Features:

- Threaded or manifold ends.



PART NO	DESCRIPTION
MANIFOLD DRY DISCONNECT	
MHV200	2" Manifold Poly Inductor with 1-1/2 Port
MHV220A	2" FP Manifold Poly Inductor

Flow Meters

Features:

- Displays overall total volume & batch total volume!
- Flow rate allows for Gallons or Liters Per Minute.
- The display reads 6 digits for Rate, 8 digits for Total and 1 decimal place reading in tenths.
- Magnetic style meter with stainless steel electrodes.
- Self calibrating meter.
- Measures water and most conductive liquids.
- Easy to change six (6) AA batteries.
- No moving parts to fail during use.
- Glass-reinforced polypropylene.
- Temperature range from 0° F to 150° F.



Note: These are not push buttons, to activate you must hold your finger over the photoeye for 2 to 4 seconds.



MFM220

PART NO	OUTLET FITTINGS
FLOW METERS	
MFM100	1" Full Port Manifold Flow Meter
MFM220	2" Full Port Manifold Flow Meter
MFM300	3" Full Port Manifold Flow Meter

Sweeps



Direct replacement for standard 90° flanged couplings:



M100SWP90



M100SWPG90



M100BRBSWP90



M100BRBSWPG90



M100125BRBSWP90



M200SWP90



M220ASWP90



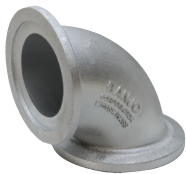
M220BRBSWP90



M220MPTSWP90



M220SWP90



M220SWP90SS



M220200SWP90



M300ASWP90



M300BRBSWP90



M300MPTSWP90



M300SWP90



M300220SWP90



M300ASWPG90



M300SWPG90



PART NO	DESCRIPTION
SWEEPS	
M100SWP90	1" Flange x Flange Sweep
M100BRBSWP90	1" Flange x Hose Shank Sweep
M100125BRBSWP90	1" Flange x 1 1/4" Hose Shank Sweep
M200SWP90	2" Flange x Flange Sweep
M220ASWP90	2" Full Port Flange x Male Adapter Sweep
M220BRBSWP90	2" Full Port Flange x Hose Shank Sweep
M220MPTSWP90	2" Full Port Flange x Male NPT Thread Sweep
M220SWP90	2" Full Port Flange x Flange Sweep
M220SWP90SS	2" Full Port SS Flange x Flange Sweep
M220200SWP90	2" Full Port Flange x 2" Flange Sweep
M300ASWP90	3" Flange x Male Adapter Sweep
M300BRBSWP90	3" Flange x Hose Shank Sweep
M300MPTSWP90	3" Flange x Male NPT Thread Sweep

PART NO	DESCRIPTION
SWEEPS	
M300SWP90	3" Flange x Flange Sweep
M300220SWP90	3" Flange X 2" Flange Sweep

PART NO	DESCRIPTION
SWEEPS W/GAUGE PORT	
M100SWPG90	1" Flange x Flange Sweep with 1/4" gauge port
M100BRBSWPG90	1" Full Port Flange x 1" Hose Shank Sweep w/ 1/4" gauge port
M300ASWPG90	3" Flange x Male Adapter Sweep w/ 1/4" gauge port
M300SWPG90	3" Flange x Flange Sweep w/ 1/4" gauge port

Boom Nozzle Pipe Adapter



PART NO	DESCRIPTION
BOOM NOZZLE PIPE ADAPTER	
M100PA	1" Flanged Pipe Adapter
M100PAC	1" Flanged Pipe Adapter Cap
M100PAT	1" Flanged Pipe Adapter Tee



M100PA



M100PAC



M100PAT

Manifold Fittings

PART NO	DESCRIPTION
MANIFOLD SWIVEL	
MSW220	2" Full Port Manifold Flange Swivel



PART NO	DESCRIPTION
FLANGE x SOCKET WELD - 316SS	
M100SWFSS	1" Flange x 1" Socket Weld Fitting
M104SWFSS	1" Flange x 1" SW Fitting x 4"
M200SWFSS	2" Flange x 2" Socket Weld Fitting
M220SWFSS	2" Full Port Flange x 2" SW Fitting
M220375SWFSS	2" Full Port Flange x 2" SW Fitting x 3-3/4"
M300SWFSS	3" Flange x 3" Socket Weld Fitting
M300375SWFSS	3" Flange x 3" SW Fitting x 3-3/4"



PART NO	DESCRIPTION
FLANGE x PVC GLUE SOCKET FITTING	
M101GSA	1" Manifold Flange Swivel
M221GSA	2" Manifold Full Port Flange x 2" PVC Glue Socket Fitting
M301GSA	3" Manifold Full Port Flange x 3" PVC Glue Socket Fitting



PART NO	DESCRIPTION
FLANGED POLY CHECK VALVES	
MCV100	1" Flanged Poly Check Valve
MCV200	2" Flanged Poly Check Valve
MCV221	2" Full Port Flanged Poly Check Valve
MCV300	3" Flanged Poly Check Valve



PART NO	DESCRIPTION
FLANGED COUPLINGS	
M100CPG	1" x 1" Flange
M200CPG	2" x 2" Flange
M220CPG	2" x 2" Full Port Flange
M220CPG6	2" x 2" Full Port Flange x 6" Long
M300CPG	3" x 3" Full Port Flange x 4" Long
M300CPG7	3" x 3" Full Port Flange x 7" Long



PART NO	DESCRIPTION
45° FLANGED COUPLINGS	
M100CPG45	1" x 1" 45° Flange
M200CPG45	2" x 2" 45° Flange
M220CPG45	2" x 2" 45° Full Port Flange
M300CPG45	3" x 3" 45° Full Port Flange



PART NO	DESCRIPTION
90° FLANGED COUPLINGS	
M100CPG90	1" x 1" 90° Flange
M200CPG90	2" x 2" 90° Flange
M200CPG90SH	2" x 2" 90° Flange
M220CPG90	2" x 2" 90° Full Port Flange
M300CPG90	3" x 3" 90° Full Port Flange



PART NO	DESCRIPTION
U BOLTS-SS	
UB100	100 Series Mounting U Bolt
UB202	200 Series Mounting U Bolt
UB220	220 Series Mounting U Bolt



Manifold Fittings



PART NO	DESCRIPTION
FLANGED REDUCER COUPLINGS	
M200100CPG	2" Port x 1" Reducer Flange
M220100CPG	2" Full Port x 1" Reducer Flange
M220200CPG	2" Full Port x 2" Reducer Flange
M300200CPG	3" x 2" Port Reducer Flange
M300220CPG	3" x 2" Full Port Reducer Flange



PART NO	DESCRIPTION
FLANGED TEE	
M100TEE	1" Flanged Tee
M101TEE	1" Flanged Tee - Long
M200100TEE	2" Port x 1" Flanged Tee
M200TEE	2" Port Flanged Tee
M200100TEEB	2" x 1" Port Flanged Tee w/Mounting Bracket
M220100TEE	2" Full Port Flanged Tee x 1" Flanged Tee
M220200TEE	2" Full Port Flanged Tee x 2" Flanged Tee
M220TEE	2" Full Port Flanged Tee
M300TEE	3" Flanged Tee



PART NO	DESCRIPTION
3" MANIFOLD Y	
M300220WYCG	M300 X M220 Y Cross with 1/4" Port



PART NO	DESCRIPTION
45° Y FLANGED COUPLINGS	
M220Y45	2" Full Port 45° Y Flange
M220YG45	2" Full Port 45° Y Flange w/ 3/4" gauge port
M300Y45	3" Full Port 45° Y Flange
M300YG45	3" Full Port 45° Y Flange w/ 3/4" gauge port



PART NO	DESCRIPTION
MAF220	2" Full Port Manifold Flange X Ansi Flange



PART NO	DESCRIPTION
FLANGE PLUGS (SOLID & W/GAUGE PORT)	
M100PLG	1" Flange Plug
M200PLG	2" Flange Plug
M220PLG	2" Full Port Flange Plug
M300PLG	3" Flange Plug
M100PLG025	1" Flange Plug with 1/4" FPT
M100PLG050	1" Flange Plug with 1/2" FPT
M200PLG018	2" Flange Plug with 1/8" FPT
M200PLG025	2" Flange Plug with 1/4" FPT
M200PLG038	2" Flange Plug with 3/8" FPT
M200PLG050	2" Flange Plug with 1/2" FPT
M200PLG075	2" Flange Plug with 3/4" FPT
M200PLG100	2" Flange Plug with 1" FPT
M220PLG075	2" Full Port Flange Plug with 3/4" FPT
M300PLG075	3" Flange Plug with 3/4" FPT
M300PLG100	3" Flange Plug with 1" FPT



PART NO	DESCRIPTION
FLANGE x FEMALE QDC	
M220D	2" Full Port Flange x 2" Female Coupler



PART NO	DESCRIPTION
FLANGE X FEMALE QDC	
M303D	3" Full Port Flange x 3" Female Coupler

MANIFOLD SYSTEMS

Manifold Fittings



MANIFOLD SYSTEMS



PART NO	DESCRIPTION
FLANGE x MALE QDC	
M100A	1" Flange x 1" Male Adapter
M200A	2" Flange x 2" Male Adapter
M220A	2" Full Port Flange x 2" Male Adapter
M300A	3" Full Port Flange x 3" Male Adapter



PART NO	DESCRIPTION
FLANGE x FEMALE NPT THREAD	
M100050FPT	1" Flange x 1/2" Pipe Thread
M100075FPT	1" Flange x 3/4" Pipe Thread
M100FPT	1" Flange x 1" Pipe Thread
M200FPT	2" Flange x 2" Pipe Thread
M220FPT	2" Full Port Flange x 2" Pipe Thread
M300FPT	3" Flange x 3" Pipe Thread



PART NO	DESCRIPTION
FLANGE x NPT THREAD	
M100075MPT	1" Flange x 3/4" Male Thread
M100MPT	1" Flange x 1" Male Thread
M100125MPT	1" Flange x 1 1/4" Male Thread
M200125MPT	2" Flange x 1 1/4" Male Thread
M200150MPT	2" Flange x 1 1/2" Male Thread
M200MPT	2" Flange x 2" Male Thread
M220MPT	2" Full Port Flange x 2" Male Thread
M300MPT	3" Flange x 3" Male Thread



PART NO	DESCRIPTION
FLANGE x 45° HOSE BARB ELBOW	
M100BRB45	1" Flange x 1" 45° Hose Barb Elbow
M200BRB45	2" Flange x 2" 45° Hose Barb Elbow
M220BRB45	2" Full Port Flange x 2" 45° HB Elbow
M300BRB45	3" Flange x 3" 45° Hose Barb Elbow



PART NO	DESCRIPTION
FLANGE x 45° HOSE BARB ELBOW	
M200150BRB45	2" Flange x 1-1/2" 45° HB Elbow



PART NO	DESCRIPTION
FLANGE x 90° HOSE BARB ELBOW	
M100075BRB90	1" Flange x 3/4" 90° HB Elbow
M100BRB90	1" Flange x 1" 90° HB Elbow
M100125BRB90	1" Flange x 1-1/4" 90° HB Elbow
M100150BRB90	1" Flange x 1-1/2" 90° HB Elbow
M200100BRB90	2" Flange x 1" 90° Hose Barb Elbow
M200125BRB90	2" Flange x 1-1/4" 90° HB Elbow
M200150BRB90	2" Flange x 1-1/2" 90° HB Elbow
M200BRB90	2" Flange x 2" 90° Hose Barb Elbow
M220150BRB90	2" Full Port Flange x 1-1/2" 90° Hose Barb Elbow
M220BRB90	2" Full Port Flange x 2" 90° HB Elbow
M300220BRB90	3" Flange x 2" 90° Hose Barb Elbow
M300BRB90	3" Flange x 3" 90° Hose Barb Elbow



PART NO	DESCRIPTION
FLANGE x HOSE BARB	
M100075BRB	1" Flange x 3/4" Hose Barb
M100BRB	1" Flange x 1" Hose Barb
M100125BRB	1" Flange x 1-1/4" Hose Barb
M200100BRB	2" Flange x 1" Hose Barb
M200125BRB	2" Flange x 1-1/4" Hose Barb
M200150BRB	2" Flange x 1-1/2" Hose Barb
M200BRB	2" Flange x 2" Hose Barb
M220100BRB	2" Full Port Flange x 1" Hose Barb
M220125BRB	2" Full Port Flange x 1-1/4" Hose Barb
M220150BRB	2" Full Port Flange x 1-1/2" Hose Barb
M220BRB	2" Full Port Flange x 2" Hose Barb
M300220BRB	3" Flange x 2" Hose Barb
M300BRB	3" Flange x 3" Hose Barb

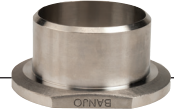
Manifold Fittings



PART NO	DESCRIPTION
FLANGE x MALE NPT THREAD -316SS	
M100MPTSS	1" Flange x 1" Male Thread
M200125MPTSS	2" Flange x 1-1/4" Male Thread
M200150MPTSS	2" Flange x 1-1/2" Male Thread
M200MPTSS	2" Flange x 2" Male Thread
M220150MPTSS	2" Full Port Flange x 1-1/2" MPT
M220MPTSS	2" Full Port Flange x 2" Male Thread
M300220MPTSS	3" Flange x 2" Full Port Male Thread
M300MPTSS	3" Flange x 3" Male Thread



PART NO	DESCRIPTION
BUTT WELD PIPE SWEEP	
BW220SWP90SS	2" 90° Full Port Stainless Steel Butt Weld Pipe Sweep



PART NO	DESCRIPTION
MANIFOLD BUTT WELD ADAPTER	
M220BWASS	2" Full Port Stainless Steel Manifold Butt Weld Adapter



PART NO	DESCRIPTION
FLANGED CROSS	
M100CR	1" Flanged Cross
M200CR	2" Flanged Cross
M220CR	2" Full Port Flanged Cross
M220CRSS	2" Full Port SS Flanged Cross
M300CR	3" Flanged Cross



Rib keeps gasket in place during assembly.



PART NO	DESCRIPTION
FLANGE GASKETS	
M100G	1" EPDM Manifold Gasket
M101G*	1" EPDM Manifold Gasket with Rib
M100GV	100 Series FKM (viton type) Gasket
150G	1-1/2" EPDM Gasket
150GV	200 Series FKM (viton type) Gasket
200G	220 Series Full Port EPDM Gasket
200GV	220 Series Full Port FKM viton Gasket
M201G*	2" EPDM Manifold Gasket with Rib
M221G*	2" Full Port EPDM Gasket with Rib
300G	3" EPDM Gasket
300GV	300 Series FKM (viton type) Gasket
M301G*	3" EPDM Manifold Gasket with Rib



PART NO	DESCRIPTION
FLANGE x HOSE BARB TEE	
M100100HBT	1" Flange x 1" Hose Barb Tee
M100125HBT	1" Flange x 1-1/4" Hose Barb Tee
M220200HBT	2" Full Port Flange x 2" HB Tee
M300300HBT	3" Flange x 3" Hose Barb Tee



PART NO	DESCRIPTION
FLANGE CLAMPS	
FC100	100 Series Worm Screw Clamp
FC200	200 Series Worm Screw Clamp
FC220	220 Series Worm Screw Clamp
FC300	300 Series Worm Screw Clamp

HYPRO®



PART NO	DESCRIPTION
UNIVERSAL FLANGED GASKETS	
UFG0100E	1" EPDM Manifold Gasket
UFG0150E	1-1/2" EPDM Manifold Gasket
UFG0200E	2" EPDM Manifold Gasket
UFG0300E	3" EPDM Manifold Gasket

MANIFOLD SYSTEMS

Manifold T Line Strainers



Features:

- EPDM gaskets.
- 316 stainless steel screens.
- 150 P.S.I. maximum.



PART NO	DESCRIPTION
1" MANIFOLD T LINE STRAINERS	
MLST100-16	1" Manifold T Strainer w/16 Mesh Screen
MLST100-30	1" Manifold T Strainer w/30 Mesh Screen
MLST100-50	1" Manifold T Strainer w/50 Mesh Screen
MLST100-80	1" Manifold T Strainer w/80 Mesh Screen
MLST100-100	1" Manifold T Strainer w/100 Mesh Screen

PART NO	DESCRIPTION
2" MANIFOLD T LINE STRAINERS	
MLST150-16	2" Manifold T Strainer w/16 Mesh Screen
MLST150-30	2" Manifold T Strainer w/30 Mesh Screen
MLST150-50	2" Manifold T Strainer w/50 Mesh Screen
MLST150-80	2" Manifold T Strainer w/80 Mesh Screen
MLST150-100	2" Manifold T Strainer w/100 Mesh Screen

Manifold Y Line Strainers

Features:

- EPDM gaskets.
- 316 stainless steel screens.
- 75 P.S.I. maximum.



Features:

- EPDM gaskets.
- 316 stainless steel screens.
- 150 P.S.I. maximum.



PART NO	DESCRIPTION
1" MANIFOLD Y LINE STRAINERS	
MLS100-20	1" Manifold Y Strainer w/20 Mesh Screen
MLS100-40	1" Manifold Y Strainer w/40 Mesh Screen
MLS100-50	1" Manifold Y Strainer w/50 Mesh Screen
MLS100-80	1" Manifold Y Strainer w/80 Mesh Screen

PART NO	DESCRIPTION
2" MANIFOLD Y LINE STRAINERS	
MLS200-06	2" Manifold Y Strainer w/6 Mesh Screen
MLS200-12	2" Manifold Y Strainer w/12 Mesh Screen
MLS200-20	2" Manifold Y Strainer w/20 Mesh Screen
MLS200-30	2" Manifold Y Strainer w/30 Mesh Screen
MLS200-50	2" Manifold Y Strainer w/50 Mesh Screen
MLS200-80	2" Manifold Y Strainer w/80 Mesh Screen
MLS200-100	2" Manifold Y Strainer w/100 Mesh Screen
MLS200-120	2" Manifold Y Strainer w/120 Mesh Screen

Manifold Y Line Strainers



Features:

- EPDM gaskets.
- 316 stainless steel screens.
- 150 P.S.I. maximum.

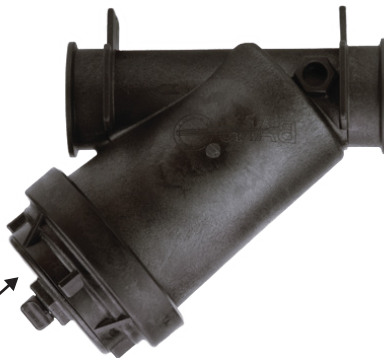


Easy off threaded strainer ring!

PART NO	DESCRIPTION
2" FULL PORT MANIFOLD Y LINE STRAINERS	
MLS222-04	2" Full Port Manifold Y Strainer w/4 Mesh Screen
MLS222-08	2" Full Port Manifold Y Strainer w/8 Mesh Screen
MLS222-10	2" Full Port Manifold Y Strainer w/10 Mesh Screen
MLS222-16	2" Full Port Manifold Y Strainer w/16 Mesh Screen
MLS222-30	2" Full Port Manifold Y Strainer w/30 Mesh Screen
MLS222-50	2" Full Port Manifold Y Strainer w/50 Mesh Screen
MLS222-80	2" Full Port Manifold Y Strainer w/80 Mesh Screen
MLS222-100	2" Full Port Manifold Y Strainer w/100 Mesh Screen

Features:

- EPDM gaskets.
- 304 stainless steel screens.
- 100 P.S.I. maximum.



Threaded end cap to remove screen!

PART NO	DESCRIPTION
3" MANIFOLD Y LINE STRAINERS	
MLS300-04	3" Manifold Y Strainer w/4 Mesh Screen
MLS300-08	3" Manifold Y Strainer w/8 Mesh Screen
MLS300-12	3" Manifold Y Strainer w/12 Mesh Screen
MLS300-20	3" Manifold Y Strainer w/20 Mesh Screen
MLS300-50	3" Manifold Y Strainer w/50 Mesh Screen

***WARNING: 3" Polypropylene "Y" Strainer to be used on suction side or non-pressure side in all applications.**

Manifold "Bottom Drain"™ & Bulkhead Tank Fittings



PART NO	DESCRIPTION
MANIFOLD POLY BOTTOM DRAIN TANK FLANGES	
MTF220BD	2" x 2" Full Port Manifold Threaded EPDM Flange
MTF300BD	3" x 3" Manifold Threaded EPDM Flange

PART NO	DESCRIPTION
MANIFOLD POLY BULKHEAD FITTINGS	
MTF220	2" Manifold Poly Bulkhead EPDM Tank Fitting
MTF300	3" Manifold Poly Bulkhead EPDM Tank Fitting

Gasket and clamp not included

Gasket not included

Stockton, CA
800-922-7253

Fresno, CA
800-532-0253

Salinas, CA
844-755-2410

Yuma, AZ
800-752-2636

Manifold Bolted Tank Fittings "Bottom Drain"™



Features:

- Stainless steel bolts.
- Bolt head plugs sealed ultrasonically.
- Glass reinforced polypropylene.
- EPDM gaskets standard.
- FKM (viton type) available.

PART NO	DESCRIPTION
MANIFOLD BOLTED BOTTOM DRAIN TANK FLANGES	
MBF100BD	1" Flange x 1" EPDM Female Thread
MBF100BDV	1" Flange x 1" FKM (viton type) Female Thread
MBF150200BD	2" Flange x 1-1/2" EPDM Female Thread
MBF150200BDV	2" Flange x 1-1/2" FKM (viton type) Female Thread
MBF200BD	2" Flange x 2" EPDM Female Thread
MBF200BDV	2" Flange x 2" FKM (viton type) Female Thread
MBF220BD	2" Full Port Flange x 2" EPDM Female Thread
MBF220BDV	2" Full Port Flange x 2" FKM (viton type) FT
MBF300BD	3" Flange x 3" EPDM Female Thread
MBF300BDV	3" Flange x 3" FKM(viton type) Female Thread



3"



Manifold Bolted Tank Fittings

PART NO	DESCRIPTION
MANIFOLD BOLTED TANK FLANGES	
MBF100	1" Flange x 1" EPDM Female Thread
MBF100V	1" Flange x 1" FKM (viton type) Female Thread
MBF200	2" Flange x 2" EPDM Female Thread
MBF200V	2" Flange x 2" FKM (viton type) Female Thread
MBF220	2" Full Port Flange x 2" EPDM Female Thread
MBF220V	2" Full Port Flange x 2" FKM (viton type) FT
MBF300	3" Flange x 3" EPDM Female Thread
MBF300V	3" Flange x 3" FKM (viton type) Female Thread



1" - 2" 4-bolt



3" 6-bolt

Longer bolts available for thicker tanks!